

## Rac3

**Catalog Number:** 26064

**Gene Symbol:** RAC3

**Description:** Anti-Rac3 Mouse Monoclonal Antibody

**Background:** Rac3 is a small GTPase of the Rho family that relays signals through direct interaction of GTP-bound Rac3 with downstream effector molecules. The Rac subfamily consists of Rac1, Rac2, and Rac3 proteins, plus the splice variant Rac1b that contains a 19-residue insertion near switch II relative to Rac1. While Rac1 is ubiquitously expressed, Rac2 and Rac3 are largely restricted to hematopoietic and neural tissues respectively. Rac3 has biochemical properties that are closely related to Rac1, such as effector interaction, nucleotide binding, and hydrolysis. Both Rac1 and Rac3 have been implicated in the regulation of cell migration and invasion in human metastatic breast cancer.

**Immunogen:** A synthetic peptide near the C-terminus of Rac3, human origin.

**Tested Applications:** ELISA, WB, IHC

**Recommended Dilutions:**

ELISA: 1:1000-1:5000

WB: 1:100-1:1000

IHC: 1:50-1:100

**Concentration:** 1 mg/ml

**Host:** Mouse

**Clonality:** Monoclonal

**Purity:** Purified from ascites

**Format:** Liquid

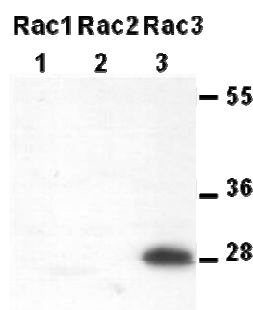
**Preservative:** No

**Constituents:** PBS (without  $Mg^{2+}$  and  $Ca^{2+}$ ), pH 7.4, 150 mM NaCl, 50% glycerol

**Species Reactivity:** Specifically recognizes Rac3, but not Rac1 or Rac2 of vertebrates.

**Storage Conditions:** Store at  $-20^{\circ}C$ . Avoid freeze / thaw cycles

Western blot:



**WB: Anti-Rac3 mAb**

Western blot analysis of recombinant Rac3 proteins.

Purified His-tagged Rac1 (Cat. # 10101), Rac2 (Cat. # 10184), and Rac3 (Cat. # 10182) proteins were blotted with anti-Rac3 monoclonal antibody (Cat. # 26064).

FOR RESEARCH USE ONLY. NOT FOR DIAGNOSTIC APPLICATIONS